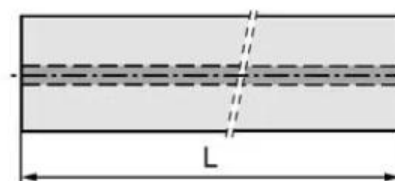
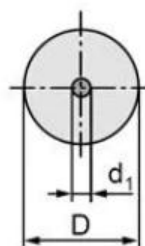


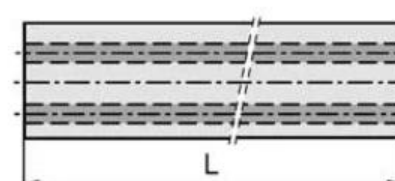
- Aste in carburo con buchi di refrigerante;
- Aste in carburo con foro di refrigerante centrale;
- Aste in carburo con due fori di refrigerante dritti;
- Aste in carburo con due buchi di refrigerante elicoidale,

材质名称	WC	CO	晶粒度	比重	硬度	抗折力
(Grade)	(%)	(%)	Grain size	Density	Hardness	TRS
	(%)	(%)	(μm)	(g/cm^3) ± 0.1	(HRA) ± 0.5	(kgf/mm^2)
H10F	90	10	0.8	14.4	91.8	>350

Rods with Central Coolant Hole



Rods with Two Straight Coolant Holes



Rods with 2 Helical Coolant Holes

