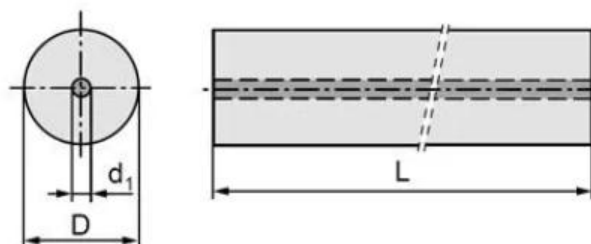


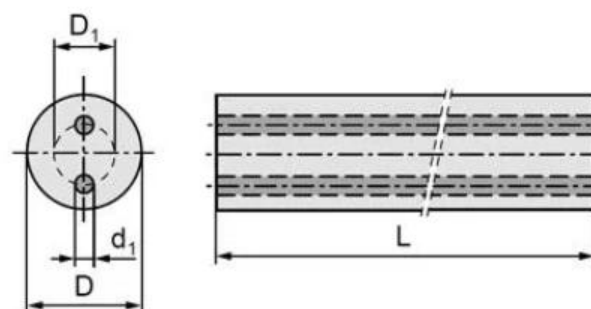
- Hastes de carboneto com orifícios de líquido de arrefecimento;
- Hastes de carboneto com orifício de líquido de arrefecimento central;
- Hastes de carboneto com dois orifícios retos;
- Hastes de carboneto com dois buracos de líquido de arrefecimento helicoidal,

材质名称 (Grade)	WC (%)	CO (%)	晶粒度	比重	硬度	抗折力
			Grain size ( $\mu\text{m}$ )	Density ( $\text{g}/\text{cm}^3$ ) $\pm 0.1$	Hardness (HRA) $\pm 0.5$	TRS ( $\text{kgf}/\text{mm}^2$ )
H10F	90	10	0.8	14.4	91.8	>350

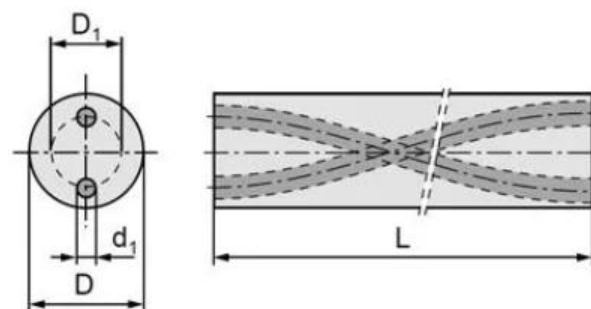
### Rods with Central Coolant Hole



### Rods with Two Straight Coolant Holes

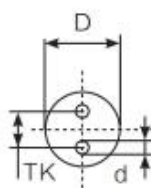
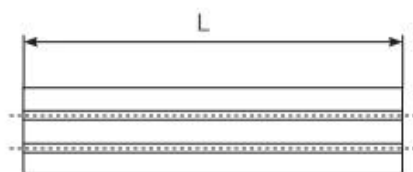


### Rods with 2 Helical Coolant Holes



# 双直孔圆棒

Rods with Two Straight Coolant Holes



规格 type	外径 (D)	内孔 (d)	孔距 (TK)	长度 (L)
$\Phi 4 \times 2\Phi 0.5-1.6 \times 330$	4	0.5	1.6	330
$\Phi 5 \times 2\Phi 0.6-2.1 \times 330$	5	0.6	2.1	330
$\Phi 6 \times 2\Phi 1.0-2.4 \times 330$	6	1.0	2.4	330
$\Phi 6 \times 2\Phi 0.9-2.6 \times 330$	6	0.9	2.6	330
$\Phi 6 \times 2\Phi 0.9-3.0 \times 330$	6	0.9	3.0	330
$\Phi 7 \times 2\Phi 0.9-3.0 \times 330$	7	0.9	3.0	330
$\Phi 8 \times 2\Phi 0.8-2.6 \times 330$	8	0.8	2.6	330
$\Phi 8 \times 2\Phi 1.0-2.6 \times 330$	8	1.0	2.6	330
$\Phi 9 \times 2\Phi 0.9-2.0 \times 330$	9	0.9	2.0	330
$\Phi 10 \times 2\Phi 1.0-2.5 \times 330$	10	1.0	2.5	330
$\Phi 11 \times 2\Phi 1.2-3.5 \times 330$	11	1.2	3.5	330
$\Phi 12 \times 2\Phi 1.2-3.5 \times 330$	12	1.2	3.5	330
$\Phi 12 \times 2\Phi 1.8-5.0 \times 330$	12	1.8	5.0	330
$\Phi 12 \times 2\Phi 1.8-5.8 \times 330$	12	1.8	5.8	330
$\Phi 13 \times 2\Phi 1.5-5.0 \times 330$	13	1.5	5.0	330
$\Phi 14 \times 2\Phi 1.5-5.0 \times 330$	14	1.5	5.0	330
$\Phi 14 \times 2\Phi 1.8-5.5 \times 330$	14	1.8	5.5	330
$\Phi 15 \times 2\Phi 1.5-5.0 \times 330$	15	1.5	5.0	330
$\Phi 16 \times 2\Phi 1.0-5.0 \times 330$	16	1.0	5.0	330
$\Phi 16 \times 2\Phi 1.8-5.5 \times 330$	16	1.8	5.5	330
$\Phi 18 \times 2\Phi 2.0-6.0 \times 330$	18	2.0	6.0	330
$\Phi 20 \times 2\Phi 2.0-6.0 \times 330$	20	2.0	6.0	330
$\Phi 21 \times 2\Phi 2.0-6.0 \times 330$	21	2.0	6.0	330
$\Phi 22 \times 2\Phi 2.0-6.0 \times 330$	22	2.0	6.0	330
$\Phi 23 \times 2\Phi 2.0-7.5 \times 330$	23	2.0	7.5	330
$\Phi 24 \times 2\Phi 2.0-7.5 \times 330$	24	2.0	7.5	330
$\Phi 25 \times 2\Phi 2.0-7.5 \times 330$	25	2.0	7.5	330

1. 标准外径:  $\Phi 4-\Phi 25$
2. 标准长度: 330mm, 其他长度可接受订制